

DrayTek

Reliable Networking Solutions



DATABOOK 2021



Founded in 1997, DrayTek Corporation is a Taiwan-based manufacturer of networking equipment and management systems. From ISDN, VDSL to LTE, DrayTek has always been endeavouring to provide SMBs and professional with reliable, fast and secure connections. Our mission is to deliver high-quality and high-integrated networking services at an affordable price, and be your reliable networking solution partner.

Contents

Router

Broadband	3-6
xDSL	7-10

Wireless AP	11-14
-------------	-------

Switch	15-18
--------	-------

Network Management	19-20
--------------------	-------

Accessories	21-22
-------------	-------

Feature Matrix	23-32
----------------	-------



Vigor2135 Series

Gigabit Broadband Router



Vigor2135ax

- Gigabit Ethernet WAN port
- 2 USB ports for 3G/4G backup or network storage
- 2 Simultaneous VPN Tunnels including 2 SSL VPN
- Bandwidth Management with intelligent VoIP QoS
- Central Management for VigorAP
- Support DrayDDNS

	WLAN	VoIP	Fiber
Vigor2135			
Vigor2135 ac/ax	•		
Vigor2135 Vac	•	•	
Vigor2135 FVac	•	•	•

Vigor2927 Series

Dual-WAN Security Router



- Dual-WAN for load-balancing or redundancy
- 2 x USB 2.0 or 1 x USB 2.0 (L model)
- SIM-base, 3G/4G LTE Router, CAT 6 up to 300Mbps connection speed (L model)
- 2 x FXS ports (V model)
- 50 simultaneous VPN tunnels, up to 25 SSL VPN
- SPI Firewall and Content Filtering
- Central Management for VigorAP & VigorSwitch
- Support DrayDDNS

Vigor2915 Series

Dual-WAN Security Router



- Dual-WAN for load-balancing or redundancy
- 1 USB port for 3G/4G WAN, printer, or network storage
- 16 concurrent VPN tunnels including up to 8 SSL VPN
- Bandwidth management & QoS for the best VoIP quality
- SPI Firewall with Content Filtering by Apps, URL keyword, and web category
- IPv6 Support
- Support DrayDDNS

	WLAN
Vigor2915	
Vigor2915 ac	•

Vigor2927FLVax



	WLAN	LTE	VoIP	Fiber
Vigor2927				
Vigor2927L		•		
Vigor2927 ac/ax	•			
Vigor2927 Lac/Lax	•	•		
Vigor2927 Vac/Vax	•		•	
Vigor2927 FLVac/FLVax	•	•	•	•

F model (Project base)

Vigor2962 Series

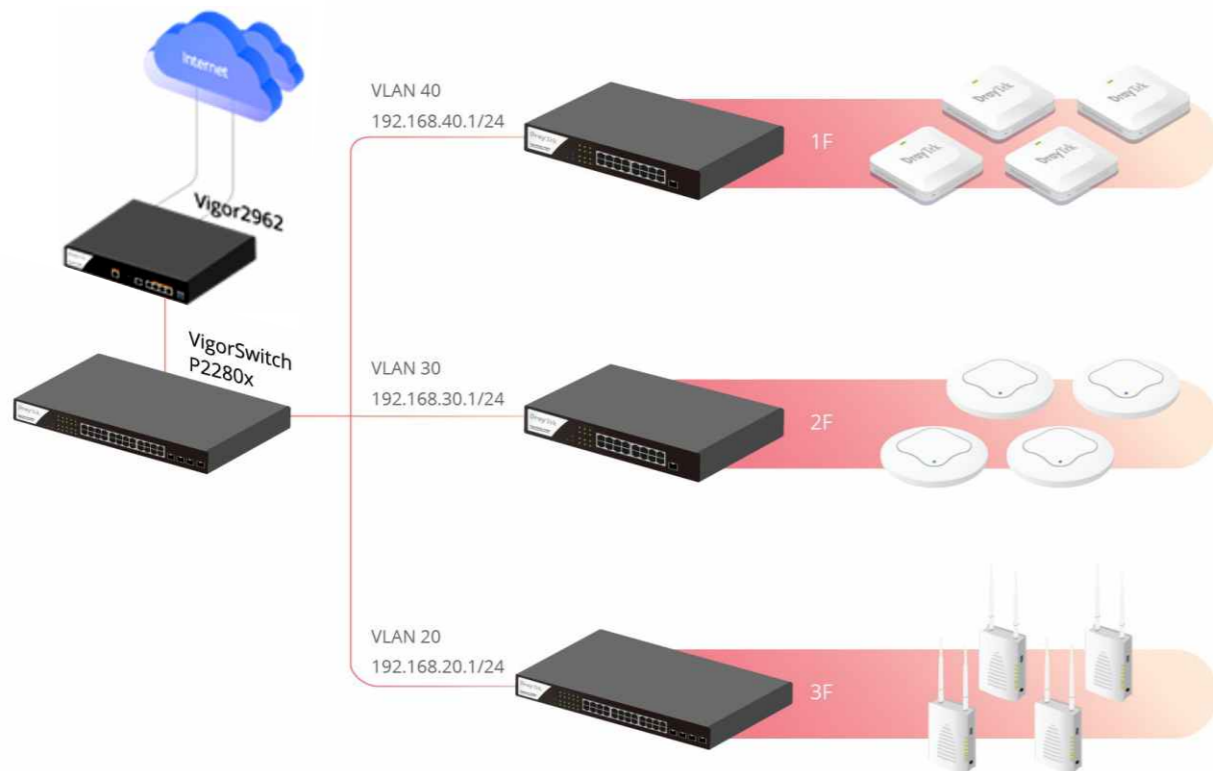
High Performance Dual-WAN Router

- 4 LAN/WAN configurable ports (1 x 2.5GbE & 1 x SFP/GbE combo & 2 x GbE) (up to 2 WANs in simultaneously)
- 2 Gigabit Ethernet LAN ports
- 2 USB for 3G/4G USB modem, printer, network storage or temperature sensor
- 200 simultaneous VPN tunnels including up to 50 SSL VPN
- Support High Availability (hardware redundancy)
- PoE+ capable ports available on Vigor2962P
- Central Management for VigorAP & VigorSwitch
- Support DrayDDNS



	PoE
Vigor2962	
Vigor2962P	●

All-in-One Management



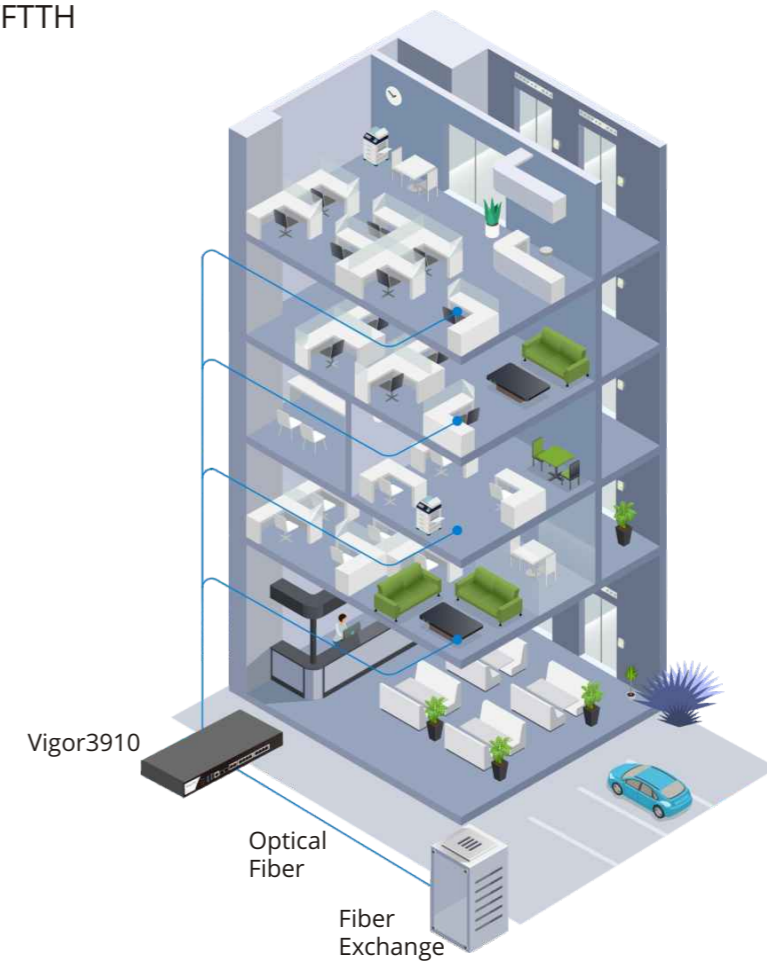
Vigor3910

High Performance 10G Router

- 8 x WAN/LAN switchable ports & 4 x fixed LAN ports
- 2 x 10G SFP+ & 2 x 2.5G Ethernet for WAN or LAN
- Quad-Core Processor provides 9.4 Gbps NAT throughput
- 1000k NAT sessions Recommended for a network of 500+ hosts
- 500 simultaneous VPN tunnels throughput over 3.3 Gbps
- Supported and managed by VigorACS
- Support DrayDDNS



Applications for FTTB/FTTH



Vigor165/167

Super Vectoring Modem



- Support VDSL2 35b Super Vectoring/ADSL2+
- Multi-PVC for triple-play applications

Vigor166

G.Fast Modem



- Support G.Fast/VDSL2 35b Super Vectoring/ADSL2+
- Multi-PVC for triple-play applications

Vigor2620 LTE Series

LTE Router



- Dual SIM for 3G/4G/LTE Cellular Connectivity with speed up to 150 Mbps
- VDSL2/ADSL2+ Modem Router
- Robust Firewall & Security for Internet activities
- 2 VPN connections for remote access and LAN-to-LAN
- Bandwidth Management with intelligent VoIP QoS
- Support DrayDDNS

	DSL	WLAN
Vigor2620L	•	
Vigor2620Ln	•	•

Vigor2765 Series

Super Vectoring Security Router



- Support VDSL2 35b Super Vectoring/ADSL2+
- Robust Firewall & Security for Internet activities
- 2 VPN connections for remote access and LAN-to-LAN
- Bandwidth Management with intelligent VoIP QoS
- Support DrayDDNS



Vigor2765ax

	WLAN	VoIP
Vigor2765		
Vigor2765 ac/ax	•	
Vigor2765 Vac	•	•

Vigor2766 Series

G.Fast Security Router



- Support G.Fast/VDSL2 35b Super Vectoring/ADSL2+
- Robust Firewall & Security for Internet activities
- 2 VPN connections for remote access and LAN-to-LAN
- Bandwidth Management with intelligent VoIP QoS
- Support DrayDDNS

	WLAN	VoIP
Vigor2766		
Vigor2766 ac	•	
Vigor2766 Vac	•	•

Vigor2865 Series

Super Vectoring Security Firewall



- Support VDSL2 35b Super Vectoring/ADSL2+
- 2 x USB 2.0 or 1 x USB 2.0 (L model)
- SIM-base, 3G/4G LTE Router, CAT 6 up to 300Mbps connection speed (L model)
- 2 x FXS ports (V model)
- 32 Simultaneous VPN Tunnels including 16 SSL VPN
- SPI Firewall with Content Filtering
- Central Management for VigorAP & VigorSwitch
- Support DrayDDNS

Vigor2866 Series

G.Fast Security Firewall



- Support G.Fast /VDSL2 35b Super Vectoring/ADSL2+
- 2 x USB 2.0 or 1 x USB 2.0 (L model)
- SIM-base, 3G/4G LTE Router, CAT 6 up to 300Mbps connection speed (L model)
- 2 x FXS ports (V model)
- 32 Simultaneous VPN Tunnels including 16 SSL VPN
- SPI Firewall with Content Filtering
- Central Management for VigorAP & VigorSwitch
- Support DrayDDNS

Vigor2865FLVax



	WLAN	LTE	VoIP	Fiber
Vigor2865				
Vigor2865L		•		
Vigor2865ac/ax	•			
Vigor2865Lac/Lax	•	•		
Vigor2865Vac/Vax	•		•	
Vigor2865FLVac/FLVax	•	•	•	•

F model (Project base)

Vigor2866FLVax



	WLAN	LTE	VoIP	Fiber
Vigor2866				
Vigor2866L		•		
Vigor2866ac/ax	•			
Vigor2866Lac/Lax	•	•		
Vigor2866Vac/Vax	•		•	
Vigor2866FLVac/FLVax	•	•	•	•

F model (Project base)

VigorAP 802

11ac Dual-Band Wall Plug AP



- Concurrent dual band
- Support 2x2 11ac
- Data rate up to 867Mbps in 5GHz and up to 300Mbps in 2.4GHz
- 1 GbE port
- Plug-n-Play Meshing (Mesh node)
- Airtime Fairness
- Band Steering
- AP-Assisted Roaming
- RADIUS client for 802.1x authentication
- Compliant with Central AP Management of Vigor Router and VigorACS

VigorAP 906

802.11ax Dual-Band AP



- Concurrent Dual-band 802.11ax with 2x2 MIMO
- AX3000 dual-band wireless interface
- 5 GbE port (including 1 PoE) + 1 USB Port
- Plug-n-Play Meshing
- 1 x PoE-capable Gigabit Ethernet port
- AirTime Fairness and Band Steering
- AP-Assisted Roaming
- Built-in RADIUS server for 802.1x authentication
- Compliant with Vigor central AP management and VigorACS

VigorAP 903

11ac Dual-Band Wireless Mesh AP



- Concurrent dual band
- Support 2x2 11ac WAVE2
- Data rate up to 867Mbps in 5GHz and up to 400Mbps in 2.4GHz
- 5 GbE port (including 1 PoE) + 1 USB Port
- Plug-n-Play Meshing
- Airtime Fairness
- Band Steering
- AP-Assisted Roaming
- Built-in RADIUS server for 802.1x authentication
- Compliant with Central AP Management of Vigor Router and VigorACS

VigorAP 912C

802.11ac Ceiling-mount AP



- Concurrent Dual-band 802.11ac with 2x2 MIMO
- Delivers data rate of up to 867 Mbps in the 5GHz band and 300 Mbps in the 2.4GHz band
- Plug-n-Play Meshing
- 1 x PoE-capable Gigabit Ethernet port
- AirTime Fairness and Band Steering
- AP-Assisted Roaming
- Built-in RADIUS server for 802.1x authentication
- Compliant with Vigor central AP management and VigorACS

VigorAP 960C

802.11ax Ceiling-mount AP



- Concurrent Dual-band 802.11ax with 2x2 MIMO
- AX1800 dual-band wireless interface
- Plug-n-Play Meshing
- 1 x PoE-capable Gigabit Ethernet port
- AirTime Fairness and Band Steering
- AP-Assisted Roaming
- Built-in RADIUS server for 802.1x authentication
- Compliant with Vigor central AP management and VigorACS

VigorAP 1060C

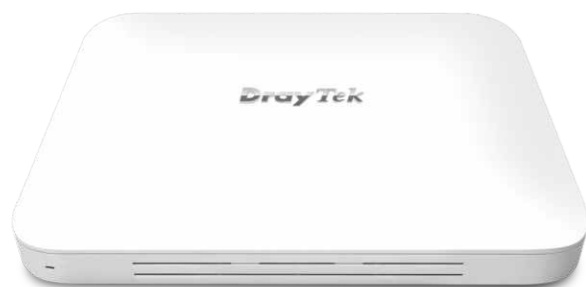
802.11ax Ceiling-mount AP



- Support 4x4:4 for both 2.4GHz and 5GHz, providing up to 3.6Gbps
- 1 x PoE-capable 2.5GbE port
- Utilize Transmission Opportunity with OFDMA
- Airtime Fairness
- Band Steering
- AP-Assisted Roaming
- Built-in RADIUS server for 802.1x authentication
- Compliant with Central AP Management of Vigor Router and VigorACS

VigorAP 1000C

Tri-band 802.11ac Ceiling-mount AP



- Support 2.4GHz and dual 5GHz radios, delivering speed up to 2.2.Gbps
- 2 GbE port (including 1 PoE)
- Airtime Fairness
- Band Steering
- AP-Assisted Roaming
- Built-in RADIUS server for 802.1x authentication
- Compliant with Central AP Management of Vigor Router and VigorACS

VigorAP 918R Series

11ac Dual-Band Outdoor AP



- IP 67-rated enclosure for outdoor usage, water-proof and dust-resistance
- 2.4/5GHz Dual band WiFi with 2x2 MIMO
- Secure VLAN/SSID grouping, up to 128 WLAN clients manageable per Radio
- IEEE 802.3az/Energy Efficient Ethernet PoE port
- Compatible with AP Management for centralized management
- High RF power for long-distance and expansive coverage
- Built-in 5GHz Direction Antenna selectable (918RPD)

	PoE Out	Directional Antenna
VigorAP 918R		
VigorAP 918RPD	•	•

VigorSwitch G1080

Smart Lite Gigabit Switch

- Simple and Easy to use network switch
- 8 x Gigabit capable ports
- Support HTTP Web Management
- QoS for application traffic prioritization
- Support 8 VLANs & 1 Trunking Group
- Power saving by 802.3az Energy Efficient Ethernet
- Support Loop Detection & Prevention



VigorSwitch G2100/P2100

L2+ Managed Switch

- 8 x Gigabit capable ports & 2 x GbE SFP ports
- 8 x Gigabit PoE+ capable ports with PoE power budget up to 140 watts (P2100)
- VLAN configuration based on 802.1q tag, MAC address, and protocol
- Auto Voice VLAN and Auto Surveillance VLAN to optimize call and video quality
- Secure Local Network by 802.1x Port Security, ACL, IP Source Guard and DHCP Snooping
- Support IPv6 with MLD Snooping, IPv6 ACL, and IPv6 DNS Resolver
- Authentication by local database, multiple RADIUS, and TACACS+ servers
- Support SNMP v1/v2c/v3, RMON, and Syslog for network monitoring
- Compliant with Switch Management of Vigor Router and VigorACS
- Static Route
- DHCP Server



Web Smart

VigorSwitch G1280/P1280

Web Smart Gigabit Switch

- 24 x Gigabit capable ports & 4 combo Gigabit SFP/RJ-45 ports
- 24 x Gigabit PoE+ capable ports with PoE power budget up to 340 watts (P1280)
- Auto Voice VLAN for easy VoIP deployment and best call quality
- QoS with 8 priority queues and rate limiting
- Dual-stack IPv4/IPv6 support
- Compliant with Switch Management of Vigor Router



VigorSwitch FX2120

L2+ Managed Switch

- 12 x 10G SFP+ ports
- VLAN configuration based on 802.1q tag, MAC address, and protocol
- Auto Voice VLAN and Auto Surveillance VLAN to optimize call and video quality
- Secure Local Network by 802.1x Port Security, ACL, IP Source Guard and DHCP Snooping
- Support IPv6 with MLD Snooping, IPv6 ACL, and IPv6 DNS Resolver
- Authentication by local database, multiple RADIUS, and TACACS+ servers
- Support SNMP v1/v2c/v3, RMON, and Syslog for network monitoring
- Compliant with Switch Management of Vigor Router and VigorACS
- Static Route
- DHCP Server



VigorSwitch Q2200x/PQ2200xb

L2+ Managed Switch

- 16 x 2.5Gigabit capable ports & 4 x 10G SFP+ ports
- 4 x PoE++ & 12 x PoE+ 2.5Gigabit capable ports with PoE power budget up to 400 watts (PQ2200xb)
- VLAN configuration based on 802.1q tag, MAC address, and protocol
- Auto Voice VLAN and Auto Surveillance VLAN to optimize call and video quality
- Secure Local Network by 802.1x Port Security, ACL, IP Source Guard and DHCP Snooping
- Support IPv6 with MLD Snooping, IPv6 ACL, and IPv6 DNS Resolver
- Authentication by local database, multiple RADIUS, and TACACS+ servers
- Support SNMP v1/v2c/v3, RMON, and Syslog for network monitoring
- Compliant with Switch Management of Vigor Router and VigorACS
- Static Route
- DHCP Server



VigorSwitch G2540x/P2540x

L2+ Managed Switch

- 48 x Gigabit capable ports & 6 x 10G SFP+ ports
- 48 x Gigabit PoE+ capable ports with PoE power budget up to 400 watts (P2540x)
- VLAN configuration based on 802.1q tag, MAC address, and protocol
- Auto Voice VLAN and Auto Surveillance VLAN to optimize call and video quality
- Secure Local Network by 802.1x Port Security, ACL, IP Source Guard and DHCP Snooping
- Authentication by local database, multiple RADIUS, and TACACS+ servers
- Support SNMP v1/v2c/v3, RMON, and Syslog for network monitoring
- Compliant with Switch Management of Vigor Router and VigorACS
- Support IPv6 with MLD Snooping, IPv6 ACL, and IPv6 DNS Resolver
- Static Route
- DHCP Server



VigorSwitch G2280x/P2280x

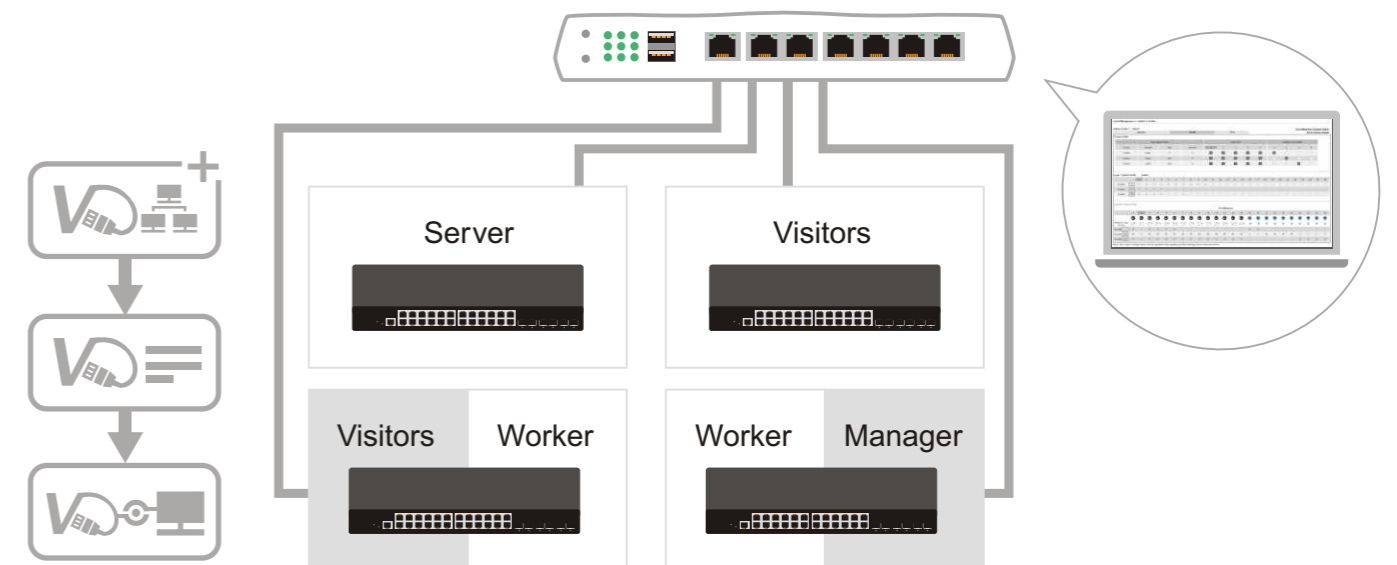
L2+ Managed Switch

- 24 x Gigabit capable ports & 4 x 10G SFP+ ports
- 24 x Gigabit PoE+ capable ports with PoE power budget up to 400 watts (P2280x)
- VLAN configuration based on 802.1q tag, MAC address, and protocol
- Auto Voice VLAN and Auto Surveillance VLAN to optimize call and video quality
- Secure Local Network by 802.1x Port Security, ACL, IP Source Guard and DHCP Snooping
- Support IPv6 with MLD Snooping, IPv6 ACL, and IPv6 DNS Resolver
- Authentication by local database, multiple RADIUS, and TACACS+ servers
- Support SNMP v1/v2c/v3, RMON, and Syslog for network monitoring
- Compliant with Switch Management of Vigor Router and VigorACS
- Static Route
- DHCP Server



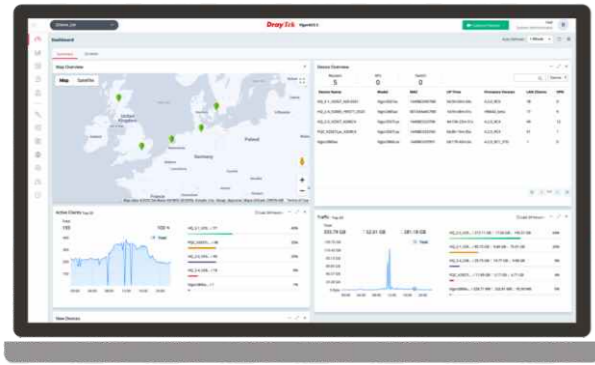
Central Switch Management

Vigor Router provides a management platform for VigorSwitch monitoring, configuration, and maintenance. Applicable to all L2 managed and Web Smart VigorSwitch.



VigorACS 3

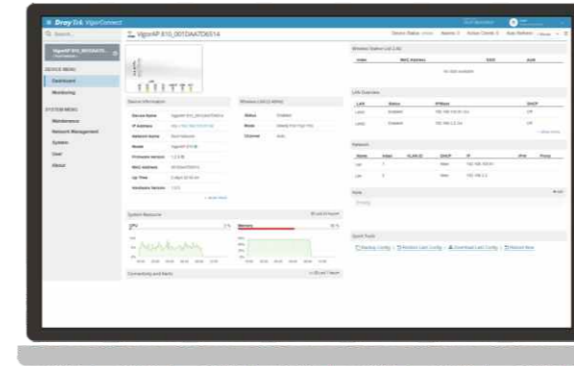
NMS for Vigor Devices and SD-WAN Orchestrator



- Zero Touch Deployment and Provisioning
- Auto-VPN for Hub-and-Spoke or Mesh Topology
- Interface Quality and SLA
- VoIP Optimization and Monitoring
- Application Visibility
- Application-Based SD-WAN Policy
- Customized Hotspot Page with Multilingual
- Hotspot Clients Analytics
- ACS Server Load Balancing / Failover

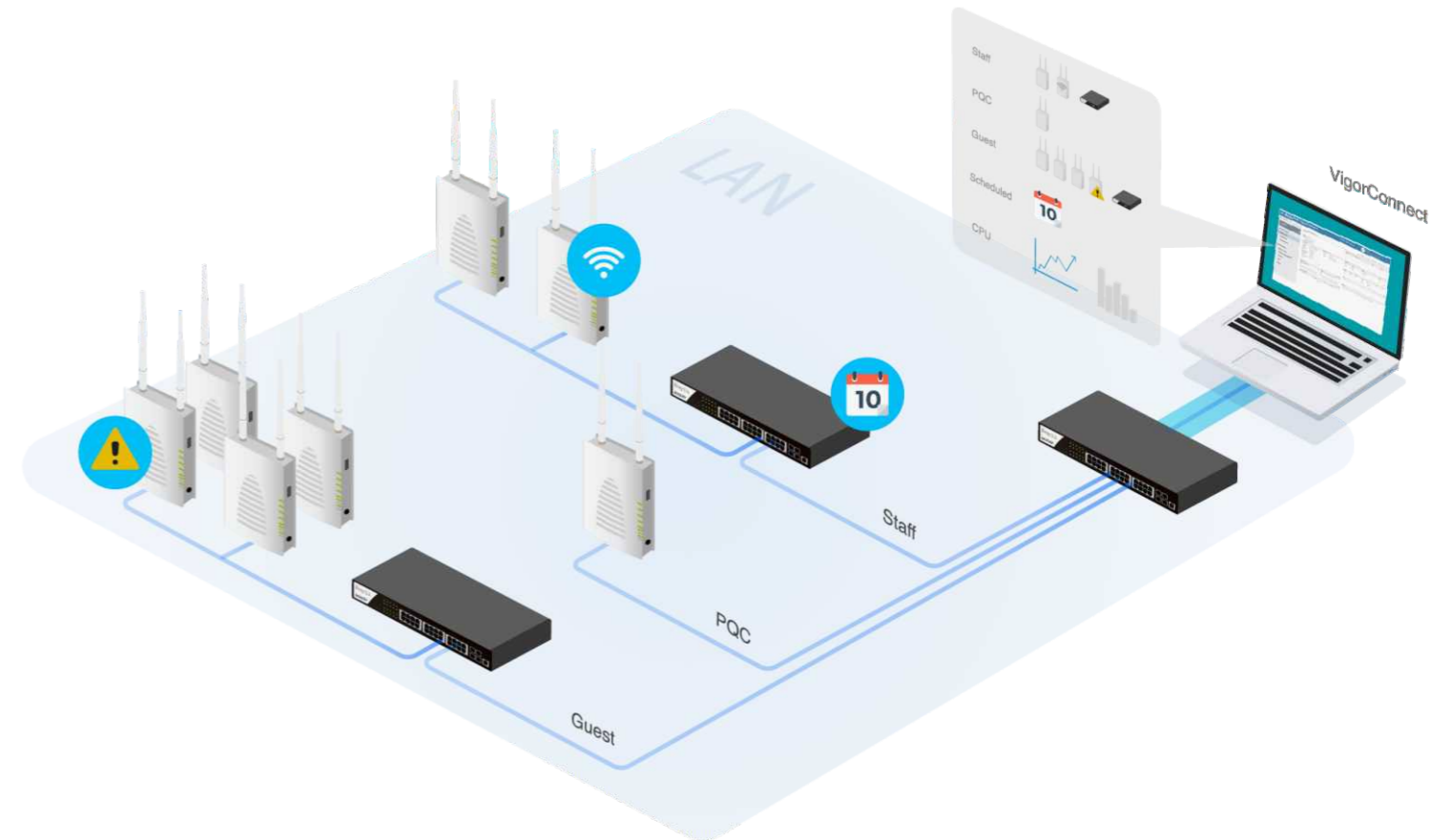
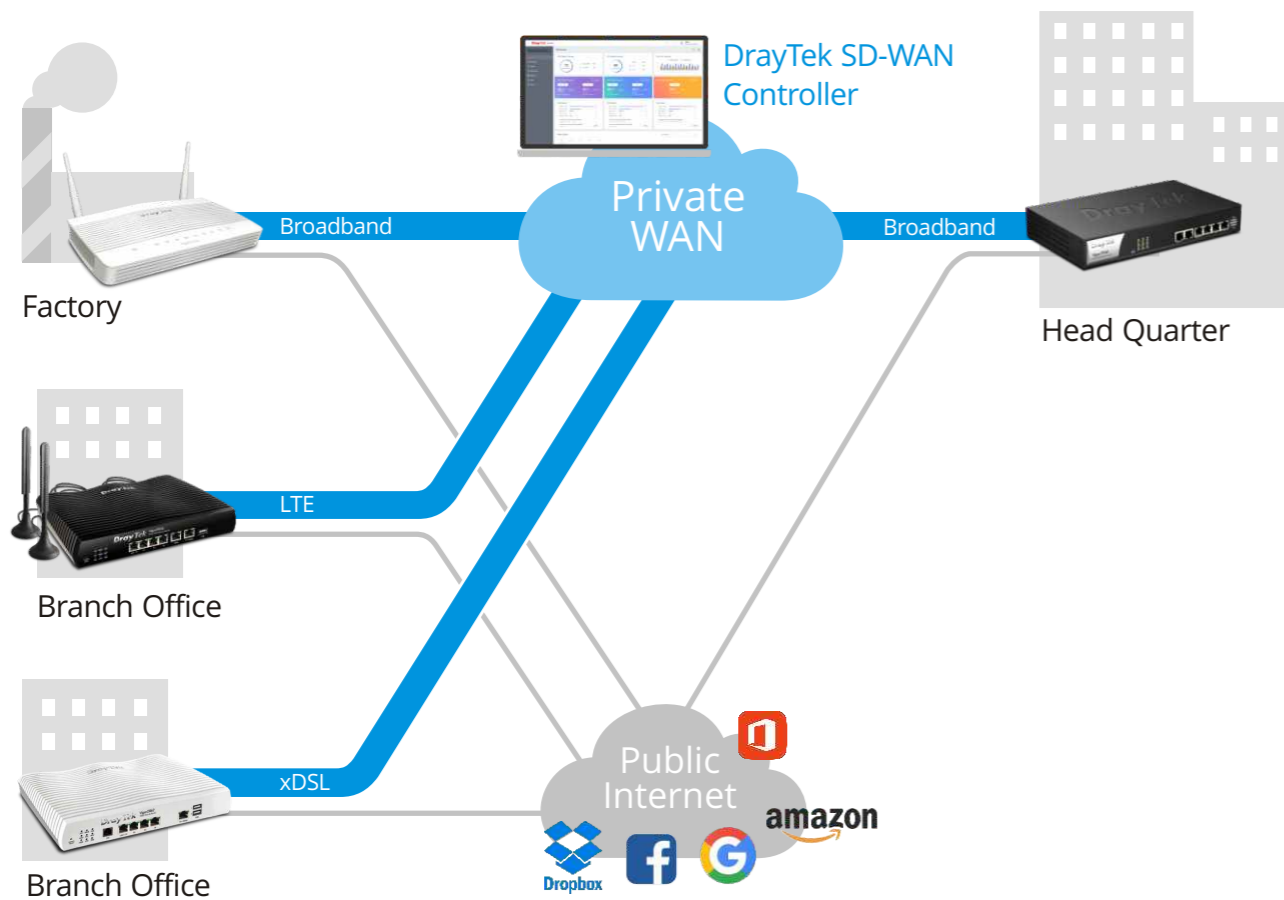
VigorConnect

Local Network Management Software for DrayTek Devices



- Automatically discover all VigorAPs/VigorSwitches on your LAN and manage up to 100 devices
- Provision AP profile to APs in a network to set up several VigorAPs; setup the VLAN or PoE for selected Switches
- Get notified when an AP/Switch lost connection with the VigorConnect Server
- Network insights about AP, client, and CPU usage, etc. over a specified period
- Schedule an off-hour firmware upgrade or configure backup/restore

SD-WAN Solution



WCF License

Real-Time Dynamic Web Content Classification Service

- Zero-Hour Security for identifying outbreaks on their way to users, instead of reacting to their pain.
- Innovative Data Cloud Technology for overcoming local storage limitations and satisfying customers' specific needs.



USB Thermometer

Temperature Sensor for DrayTek routers

- Direct router/AP connection
- Outer sensor included (1M)
- Data is displayed in °F or °C
- Informative Web Interface
- Alarm Max/Min Thresholds
- Continuous Reporting to syslog
- Email & SMS Reporting on threshold breach
- RoHS Compliant



DAC-CX10

10G SFP+ Cable

- Support for multi-gigabit data rates up to 10Gb/s
- Data rates backward compatible to 1Gb/s
- Hot Pluggable SFP+



Antenna Series



	ANT-1205	ANT-2520
Description	2.4GHz/5GHz Indoor Omni-Directional Antenna	2.4GHz/5GHz Indoor Directional Patch Antenna
Environment	Indoor	Indoor
Frequency Range	2400~2500 MHz	2400~2500 MHz
	5150~5850 MHz	5150~5875 MHz
Peak Gain @ 2.4GHz	5 dBi	7.5 dBi
@ 5GHz	4.5 dBi	10 dBi
VSWR @ 2.4GHz	< 2.0	≤ 2.0
@ 5GHz	< 2.0	
Polarization	Linear	Vertical, Linear
HPBW/Horizontal @ 2.4GHz		70°
@ 5GHz		60°
HPBW/Vertical @ 2.4GHz		60°
@ 5GHz		30°
Power Handling	1W	2W
Impedance	50 Ω	50 Ω
Connector	RP SMA Plug	RP SMA Plug

DrayTek Rack-mount Plate

The metal rack-mount plate is designed for sustaining the device of Vigor2865/Vigor2927 series inside the 19-inch cabinet.



Broadband Router

		Vigor2135 series					Vigor2915 series		Vigor2927 series					Vigor2962 series	Vigor3910
		2135	2135ac	2135ax	2135Vac	2135Fvac	2915	2915ac	2927	2927ac	2927ax	2927Vac	2927Lac	2962/P	3910
WAN	Fixed WAN Port	1 x GbE				1 x SFP	1 x GbE		1 x GbE				1 x GbE + 1 x LTE		
	WAN/LAN Switchable Port						1 x GbE		1 x GbE					1 x 2.5GbE + 2 x GbE + 1 x GbE/SFP Combo	2 x 2.5GbE + 4 x GbE + 2 x SFP+
LAN	Fixed LAN Port	4 x GbE					3 x GbE		5 x GbE					2 x GbE	4 x GbE
	LAN Subnet	4					4		8					20	50
	DMZ Port								1						
USB Port		2					1		2			1	2	2	
NAT Sessions		50,000					30,000		60,000					300,000 <small>(f/w v3.9.4)</small>	1,000,000
WLAN	Standard		11a/b/g/n/ac wave 2	11a/b/g/n/ac wave 2/ax	11a/b/g/n/ac Wave 2			11a/b/g/n/ac wave 2		11a/b/g/n/ac wave 2	11a/b/g/n/ac wave 2/ax	11a/b/g/n/ac wave 2			
	2.4GHz			•			•				•				
	5GHz			•			•				•				
	MIMO			2 x 2			2 x 2		2 x 2						
	Antennas (External)			2			2		2						
VPN	Concurrent VPN Tunnels	2					16		50					200	500
	Max. Concurrent SSL VPN	2					8		25					50	200
Routing	Static Route	•					•		•					•	•
	Policy Route	•					•		•					•	•
	RIP	•					•		•					•	•
	BGP								•					•	•
	OSPF													•	•
CSM	APP Enforcement	•					•		•					•	•
	URL & Keywords Filter	•					•		•					•	•
	Web Content Filter	•					•		•					•	•
	DNS Filter	•					•		•					•	•
VoIP	FXS Port				2							2			
	FXO Port														

xDSL Router

		Vigor160 series			Vigor2620 LTE series		Vigor2765 series				Vigor2766 series		
		165	166	167	2620L	2620Ln	2765	2765ac	2765ax	2765Vac	2766	2766ac	2766Vac
WAN	Fixed WAN Port	1 x A/VDSL /35b	1 x A/VDSL /35b/G.Fast	1 x A/VDSL /35b	1 x A/VDSL + 2 x LTE		1 x AVDSL/35b				1 x AVDSL/35b/G.Fast		
	WAN/LAN Switchable Port				1 x GbE		1 x GbE				1 x GbE		
LAN	Fixed LAN Port	2 x GbE			1 x GbE		3 x GbE				3 x GbE		
	LAN Subnet	1			2		2				2		
	DMZ Port												
USB Port							2				2		
NAT Sessions		10,000			30,000		50,000				50,000		
WLAN	Standard				11b/g/n		11a/b/g/n/ ac wave 2				11a/b/g/n/ ac wave 2		
	2.4GHz				•		•				•		
	5GHz						•				•		
	MIMO				2 x 2		2 x 2				2 x 2		
	Antennas (External)				2 (Internal)		2				2		
VPN	Concurrent VPN Tunnels				2		2				2		
	Max. Concurrent SSL VPN				2		2				2		
Routing	Static Route	•			•		•				•		
	Policy Route				•		•				•		
	RIP	•			•		•				•		
	BGP												
	OSPF												
CSM	APP Enforcement				•		•				•		
	URL & Keywords Filter	•			•		•				•		
	Web Content Filter				•		•				•		
	DNS Filter				•		•				•		
VoIP	FXS Port										2		2
	FXO Port												

xDSL Router

		Vigor2865 series					Vigor2866 series				
		2865	2865ac	2865ax	2865Vac	2865Lac	2866	2866ac	2866ax	2866Vac	2866Lac
WAN	Fixed WAN Port	1 x AVDSL/35b			1 x AVDSL/35b + 1 x LTE		1 x AVDSL/35b/G.Fast			1 x AVDSL/35b/G.Fast + 1 x LTE	
	WAN/LAN Switchable Port	1 x GbE					1 x GbE				
LAN	Fixed LAN Port	5 x GbE					5 x GbE				
	LAN Subnet	8					8				
	DMZ Port	1					1				
USB Port		2			1		2			1	
NAT Sessions		60,000					60,000				
WLAN	Standard		11a/b/g/n/ ac wave 2	11a/b/g/n/ ac wave 2/ax	11a/b/g/n/ ac wave 2		11a/b/g/n/ ac wave 2	11a/b/g/n/ ac wave 2/ax	11a/b/g/n/ ac wave 2		
	2.4GHz				•				•		
	5GHz				•				•		
	MIMO				2 x 2				2 x 2		
	Antennas (External)				2				2		
VPN	Concurrent VPN Tunnels	32					32				
	Max. Concurrent SSL VPN	16					16				
Routing	Static Route	•					•				
	Policy Route	•					•				
	RIP	•					•				
	BGP	•					•				
	OSPF										
CSM	APP Enforcement	•					•				
	URL & Keywords Filter	•					•				
	Web Content Filter	•					•				
	DNS Filter	•					•				
VoIP	FXS Port				2				2		
	FXO Port										

Access Point

		VigorAP 802	VigorAP 903	VigorAP 906	VigorAP 912C	VigorAP 960C	VigorAP 1000C	VigorAP 1060C	VigorAP 918R series	
		802	903	906	912C	960C	1000C	1060C	918R	918RPD
Band	2.4GHz	•	•	•	•	•	•	•	•	•
	5GHz	•	•	•	•	•	Dual	•	•	•
WLAN	Wi-Fi Standard	11a/b/g/n/ac	11a/b/g/n/ac wave 2	11a/b/g/n/ac wave 2/ax	11a/b/g/n/ac wave 2	11a/b/g/n/ac wave 2/ax	11a/b/g/n/ac wave 2	11a/b/g/n/ac wave 2/ax	11a/b/g/n/ac wave 2	11a/b/g/n/ac wave 2
	Antenna	2 x 2	2 x 2	2 x 2	2 x 2	2 x 2	2 x 2	4 x 4	2 x 2	2 x 2
		Internal	External	External	Internal	Internal	Internal	Internal	External	External + Internal
	AirTime Fairness	•	•	•	•	•	•	•	•	•
Roaming	•	•	•	•	•	•	•	•	•	
LAN	Ethernet	1 x GbE	5 x GbE	5 x GbE	1 x GbE	1 x GbE	2 x GbE	1 x 2.5GbE	1 x GbE	2 x GbE
	PoE-PD		•	•	•	•	•	•	•	•
	PoE-PSE									•
Mode	AP	•	•	•	•	•	•	•	•	•
	Range Extender	•	•	•	•	•	•	•	•	•
	Mesh	Node	•	•	•	•	•	•	•	•
Mounting (Desk/Wall/Ceiling/Pole)		Plug	D/W	D/W	C/W	C/W	C/W	C/W	W/P	W/P
Environment		Indoor	Indoor	Indoor	Indoor	Indoor	Indoor	Indoor	Outdoor	Outdoor
USB Port			1							
Max. Data Rate		300 + 867 Mbps	400 + 867 Mbps	574+2400 Mbps	300 + 867 Mbps	600+1200 Mbps	400+867+867 Mbps	1200+2400 Mbps	400 + 867 Mbps	400 + 867 Mbps
Built-in RADIUS		Client	•	•	•	•	•	•	•	•
Central Management		•	•	•	•	•	•	•	•	•
Stand-alone Operation		•	•	•	•	•	•	•	•	•

Switch

		Smart Lite	Web Smart		L2+ Managed			L2+ Managed					
		VigorSwitch G1080	VigorSwitch G1280	VigorSwitch P1280	VigorSwitch G2100	VigorSwitch P2100	VigorSwitch FX2120	VigorSwitch Q2200x	VigorSwitch PQ2200xb	VigorSwitch G2280x	VigorSwitch P2280x	VigorSwitch G2540x	VigorSwitch P2540x
Ports	Ethernet	8 x GbE	24 x GbE	24 x GbE	8 x GbE	8 x GbE		16 x 2.5GbE	16 x 2.5GbE	24 x GbE	24 x GbE	48 x GbE	48 x GbE
	SFP				2	2	12 (SFP+)	4 (SFP+)	4 (SFP+)	4 (SFP+)	4 (SFP+)	6 (SFP+)	6 (SFP+)
	SFP/GbE Combo		4	4									
	Console				•	•	•	•	•	•	•	•	•
PoE	Ports			24		8			4 PoE++ & 12 PoE+		24		48
	Power Budget			340		140			400		400		400
VLAN	Tag Based	•	•	•	•	•	•	•	•	•	•	•	•
	MAC-Based		•	•	•	•	•	•	•	•	•	•	•
	Voice		•	•	•	•	•	•	•	•	•	•	•
	Surveillance		•	•	•	•	•	•	•	•	•	•	•
	GVRP				•	•	•	•	•	•	•	•	•
Security	ACL		•	•	•	•	•	•	•	•	•	•	•
	Storm Control	•	•	•	•	•	•	•	•	•	•	•	•
	IPSG		•	•	•	•	•	•	•	•	•	•	•
	802.1x				•	•	•	•	•	•	•	•	•
	DHCP Snooping				•	•	•	•	•	•	•	•	•
	Loop Protection	•	•	•	•	•	•	•	•	•	•	•	•
Spanning Tree	STP		•	•	•	•	•	•	•	•	•	•	•
	RSTP		•	•	•	•	•	•	•	•	•	•	•
	MSTP				•	•	•	•	•	•	•	•	•
Multicast	IGMP Snooping	•	•	•	•	•	•	•	•	•	•	•	•
	MLD Snooping				•	•	•	•	•	•	•	•	•
Link Aggregation Group		1	8	8	4	4	8	8	8	8	8	8	8
SNMP			v1/v2c/v3		v1/v2c/v3			v1/v2c/v3					
Switch Management		•	•	•	•	•	•	•	•	•	•	•	•

DrayTek

www.draytek.com

Tel: +886-3-5972727 Fax: +886-3-5972121 E-mail: info@draytek.com

Trademarks and brand names are the properties of their respective owners.

The scope of delivery and other details are subject to change without prior notice.

Copyrights © DrayTek Corp. All right reserved.